



BENJAMIN STEEL

SUPPLY CHAIN SOLUTIONS

The

FICEP Angle Line

a Benjamin Steel Solution

Angle capacity based upon:

A36 mat'l: Min 1½" x 1½" x ¾"
Max 6" x 6" x ¾"

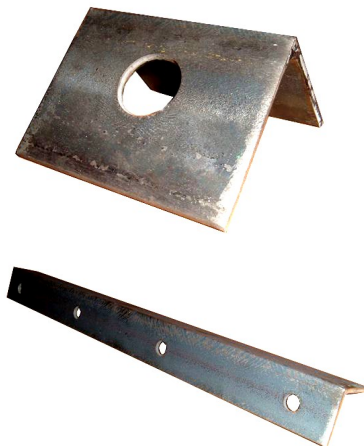
Flats: Min 2" x ¾"
Max 6¾" x ¾"

Channels: Min 3⅛"
Max 6¾"

Max bar length is 40'

Max tool size X thickness:

A36 mat'l: 1¼" x ¾"



Punch Station Specs:

- 2 punch stations for each angle leg
- Capacity: 88 tons
- Throat depth: 6"
- Stroke: 1¾"
- Max tool size with standard tooling: 1¼"
- Max thickness: ¾"
- Gauge line stroke with respect to the inside of the angle leg: Min +¾" / Max +5⅛"

Gauge Line Limitations with Standard Tool Holders	
Angle Size Range	Minimum Gauge
1 ¹ / ₄ " to 2"	0.63" plus the angle leg thickness
2 ³ / ₈ " to 4"	1.04" plus the angle leg thickness
4" to 6"	1.20" plus the angle leg thickness

- The marking unit is suitable to mark one leg of the angle. The marking unit is fitted with a disc holder for characters whose rotation is CNC controlled by means of a servomotor.
- The marking cycle is automatically selected by the CNC program and synchronized with movement of the angle through the line to accommodate the required part marking.
 - 38 marking stations
 - Letter and number dimension is 5/8" x 5/16"
 - 8.8 tons marking strength on every character

For additional details call Benjamin Steel today!

Notes:

